

Greensteel Offices

SHEDS & KIT HOMES - Australian Manufactured
Rockhampton, Queensland

Head Office And Sales

91 Gladstone Road
Rockhampton, QLD
Ph: 07 49 27 12 11

Emerald

79-81 Macarley Access Road
Emerald, QLD
Ph: 07 49 82 28 35

Non-Cyclonic Buildings are also available
Delivery is not included in pricing

WEBSITE: www.greensteel.com.au
EMAIL: sales@greensteel.com.au

**SHADE SHELTERS
CARPORTS
SHEDS
FARM SHEDS
TRANSPORTABLES
CABINS
KIT HOMES
STEEL MATERIALS**

**SPECIALS
SHED**

PH: 07 49 27 12 11 **WEBSITE: www.greensteel.com.au**
EMAIL: sales@greensteel.com.au

Shade Shelters

C2

Material Sales

C2

4000 x 6000

- 2400 HEIGHT
- GROUND PEG or DYNABOLT
- SELECTED COLOURS
- TRIMCLAD

\$2834 inc GST

4000 x 6000

- 3000 HEIGHT
- GROUND PEG or DYNABOLT
- SELECTED COLOURS
- TRIMCLAD

\$2885 inc GST

C-SECTION

NESTING CHANNEL

TOP HAT BATTEN

CEILING BATTEN

CUSTOM FLASHING

STUD, PLATE & NOGGIN

MEZZANINES

AWNINGS

Non-Cyclonic Buildings are also available
Delivery is not included in pricing

Transportables

C2

Shade Shelters

C2

3200 x 6200

- BUILT TO LOCK-UP STAGE
- CYCLONIC RATED (C2)
- CLASS 1 ENGINEERING
- SKIDS WITH LIFTING POINTS

\$POA

6000 x 6000

- 2400 HEIGHT
- GROUND PEG or DYNABOLT
- SELECTED COLOURS
- TRIMCLAD

\$3310 inc GST

6000 x 6000

- 3000 HEIGHT
- GROUND PEG or DYNABOLT
- SELECTED COLOURS
- TRIMCLAD

\$3355 inc GST

Non-Cyclonic Buildings are also available
Delivery is not included in pricing

Carports

C2

Cabins

C2

3000 x 6000

- 2400 HEIGHT
- SKILLION ROOF
- SELECTED COLOURS
- TRIMCLAD or CUSTOM ORB

\$1820 inc GST

3000 x 6000

- 2400 HEIGHT
- GABLE ROOF
- SELECTED COLOURS
- TRIMCLAD
- CAST INTO FOOTINGS

\$2110 inc GST

CARINA

- 3300 x 9000 / 450 EAVES
- CLASS 1 ENGINEERING
- FLAT PACK
- TRIMCLAD or CUSTOM ORB
- ENERGY EFFICIENCY RATING

\$15,880 inc GST

LEO

- 4500 x 9000 / 450 EAVES
- 2 BED CABIN
- CLASS 1 ENGINEERING
- FLAT PACK
- TRIMCLAD or CUSTOM ORB

\$19,250 inc GST

Non-Cyclonic Buildings are also available
Delivery is not included in pricing

EXTRAS: Primaplanck Option . Awnings - Gable or Skillion
Available in Non-Cyclonic

Cabins

c2

Carports

c2

CAPRICORN

- 3150 x 5000 / 450 EAVES
- CLASS 1 ENGINEERING
- FLAT PACK
- TRIMCLAD or CUSTOM ORB
- ENERGY EFFICIENCY RATING

\$10250 inc GST

LIBRA

- 3300 x 9000 / 450 EAVES
- CLASS 1 ENGINEERING
- FLAT PACK
- TRIMCLAD or CUSTOM ORB
- ENERGY EFFICIENCY RATING

\$15,640 inc GST

6000 x 6000

- 2400 HEIGHT
- SKILLION ROOF
- SELECTED COLOURS
- TRIMCLAD or CUSTOM ORB

\$2630 inc GST

6000 x 6000

- 2400 HEIGHT
- GABLE ROOF
- SELECTED COLOURS
- TRIMCLAD
- CAST INTO FOOTINGS

\$3120 inc GST

Non-Cyclonic Buildings are also available
Delivery is not included in pricing

Carports

Farm Sheds

OPEN FRONT c2

6000 x 6000

- 3000 HEIGHT
- SKILLION ROOF
- SELECTED COLOURS
- TRIMCLAD or CUSTOM ORB

\$2890 inc GST

6000 x 6000

- 3000 HEIGHT
- GABLE ROOF
- SELECTED COLOURS
- TRIMCLAD
- CAST INTO FOOTINGS

\$3300 inc GST

15000 x 30000

- 6000 HEIGHT
- GABLE ROOF
- ZINC WALLS and ROOF
- TRIMCLAD or CUSTOM ORB

\$44,355 inc GST

18000 x 30000

- 5000 HEIGHT
- GABLE ROOF
- ZINC WALLS and ROOF
- TRIMCLAD or CUSTOM ORB

\$53,220 inc GST

Non-Cyclonic Buildings are also available
Delivery is not included in pricing

FARM SHEDS AVAILABLE in Colour
FARM SHEDS AVAILABLE in Non-Cyclonic

Farm Sheds

OPEN FRONT c2

Carports

c2

9000 x 15000

- 3600 HEIGHT
- GABLE ROOF
- ZINC WALLS and ROOF
- TRIMCLAD or CUSTOM ORB

\$15,370 inc GST

12000 x 18000

- 4000 HEIGHT
- GABLE ROOF
- ZINC WALLS and ROOF
- TRIMCLAD or CUSTOM ORB

\$21,490 inc GST

7500 x 12000

- 3000 HEIGHT
- SKILLION ROOF
- SELECTED COLOURS
- TRIMCLAD or CUSTOM ORB

\$6200 inc GST

7500 x 12000

- 3000 HEIGHT
- GABLE ROOF
- SELECTED COLOURS
- TRIMCLAD
- CAST INTO FOOTINGS

\$6900 inc GST

Non-Cyclonic Buildings are also available
Delivery is not included in pricing

Domestic Sheds

Farm Sheds

OPEN FRONT c2

STUD FRAME SHEDS
THE SIMPLEST WAY TO BUILD YOUR SHED

- SIMPLE AND EASY TO CONSTRUCT
- OPTIONS TO ALLOW FOR INTERNAL LINING
- WIDE VARIETY OF CLADDING OPTIONS
- OPTIONAL EAVES
- MORE INTERNAL SPACE
- MADE TO WIND RATINGS CYCLONIC OR NON-CYCLONIC

6000 x 9000

- 2700 HEIGHT
- SKILLION ROOF
- SELECTED COLOURS
- TRIMCLAD or CUSTOM ORB

\$6760 inc GST

7500 x 12000

- 3600 HEIGHT
- SKILLION ROOF
- SELECTED COLOURS
- TRIMCLAD or CUSTOM ORB

\$12,200 inc GST

FARM SHEDS AVAILABLE in Colour
FARM SHEDS AVAILABLE in Non-Cyclonic

FARM SHEDS AVAILABLE in Gable
FARM SHEDS AVAILABLE in Zinc



Domestic Sheds c2

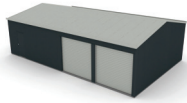


- 6000 x 12000**
- 2700 HEIGHT
- GABLE or SKILLION
- STUD FRAME or BOLT UP
- SELECTED COLOURS
- TRIMCLAD or CUSTOM ORB
- 2 ROLLER DOORS incl.

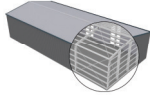
\$11,320 inc GST

- 7500 x 15000**
- 3600 HEIGHT
- GABLE or SKILLION
- STUD FRAME or BOLT UP
- SELECTED COLOURS
- TRIMCLAD or CUSTOM ORB

\$17,480 inc GST



Domestic Sheds



PORTAL FRAME SHEDS THE ORIGINAL NON-WELDED BOLT-UP SHED

- LARGE SPAN FOR INDUSTRIAL USE
- BOLTS TOGETHER WITH NO WELDING
- SPANS FROM 6 METRES THROUGH TO 20 METRES
- LARGER SPANS USING UNIVERSAL BEAMS
- MADE TO WIND RATINGS CYCLONIC OR NON-CYCLONIC



Domestic Sheds c2



- 6000 x 6000**
- 2400 HEIGHT
- GABLE or SKILLION
- STUD FRAME or BOLT UP
- SELECTED COLOURS
- TRIMCLAD or CUSTOM ORB
- 2 ROLLER DOORS incl.

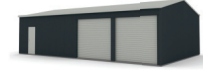
\$6940 inc GST

- 6000 x 9000**
- 2700 HEIGHT
- GABLE or SKILLION
- STUD FRAME or BOLT UP
- SELECTED COLOURS
- TRIMCLAD or CUSTOM ORB
- 2 ROLLER DOORS incl.

\$9420 inc GST



Domestic Sheds c2



- 7500 x 12000**
- 3000 HEIGHT
- GABLE or SKILLION
- STUD FRAME or BOLT UP
- SELECTED COLOURS
- TRIMCLAD or CUSTOM ORB
- 2 ROLLER DOORS incl.

\$12,610 inc GST

- 9000 x 12000**
- 3600 HEIGHT
- GABLE or SKILLION
- STUD FRAME or BOLT UP
- SELECTED COLOURS
- TRIMCLAD or CUSTOM ORB
- 2 ROLLER DOORS incl.

\$16,570 inc GST



Non-Cyclonic Buildings are also available
Delivery is not included in pricing

EXTRAS: Extra Height . Extra Roller Doors . Windows
PA Doors . Awnings . AVAILABLE in Non-Cyclonic

EXTRAS: Extra Height . Extra Roller Doors . Windows
PA Doors . Awnings . AVAILABLE in Non-Cyclonic